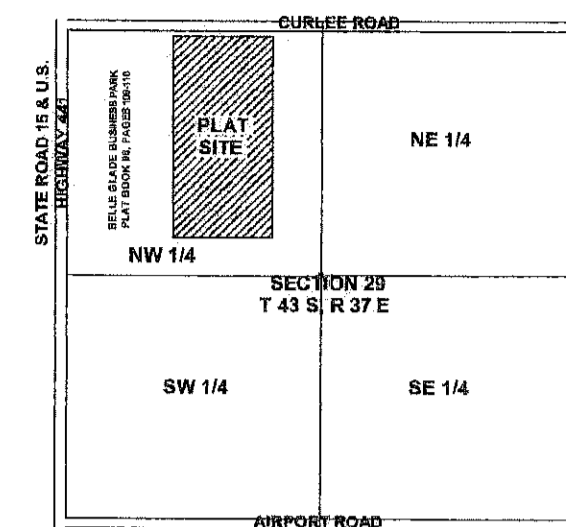


BELLE GLADE BUSINESS PARK PHASE II, REPLAT

BEING A REPLAT OF BELLE GLADE BUSINESS PARK PHASE II,
AS RECORDED IN PLAT BOOK 105, PAGES 79-80,
PUBLIC RECORDS OF PALM BEACH COUNTY, FLORIDA,
AND A PORTION OF THE NORTHWEST QUARTER
OF SECTION 29 TOWNSHIP 43 SOUTH, RANGE 37 EAST,
CITY OF BELLE GLADE,
PALM BEACH COUNTY, FLORIDA

SEPTEMBER 2006

PAG SURVEYORS, INC. LB 3411
1016 SOUTHEAST 4TH STREET
BELLE GLADE, FL 33430



LOCATION SKETCH NOT TO SCALE

STATE OF FLORIDA
COUNTY OF PALM BEACH
THIS PLAT WAS FILED FOR
RECORD AT 10:48 AM
THIS 28 DAY OF September
2006 AND DULY RECORDED IN
PLAT BOOK No. 105-106
ON PAGES 79-80
SHARON R. BOCK
CLERK OF THE CIRCUIT COURT
BY: *Sharon A. Bock*
DEPUTY CLERK

DEDICATION AND RESERVATION

KNOW ALL MEN BY THESE PRESENTS THAT THE CITY OF BELLE GLADE, TIMOTHY B. MCKEE, INC., A FLORIDA CORPORATION, RAY'S HERITAGE, LLC, A FLORIDA LIMITED LIABILITY COMPANY AND S.K.A. FARMS, L.L.P., LTD. A GEORGIA LIMITED LIABILITY LIMITED PARTNERSHIP, OWNERS OF THE LAND SHOWN HEREON AS BELLE GLADE BUSINESS PARK PHASE II, REPLAT, BEING A REPLAT OF BELLE GLADE BUSINESS PARK PHASE II, AS RECORDED IN PLAT BOOK 105, PAGES 79-80, AND A PORTION OF THE NORTHWEST QUARTER OF SECTION 29, TOWNSHIP 43 SOUTH, RANGE 37 EAST, CITY OF BELLE GLADE, PALM BEACH COUNTY, FLORIDA, BEING MORE PARTICULARLY DESCRIBED AS FOLLOWS: COMMENCING AT THE NORTHWEST CORNER OF SECTION 29, TOWNSHIP 43 SOUTH, RANGE 37 EAST, PALM BEACH COUNTY, FLORIDA, THENCE SOUTH 0°22'48" EAST 150.00 FEET ALONG THE WEST LINE OF SAID SECTION 29 TO THE WESTERLY EXTENSION OF THE SOUTH RIGHT-OF-WAY LINE OF CURLEE ROAD AS NOW LAID OUT AND IN USE, THENCE NORTH 89°56'34" EAST 1094.28 FEET ALONG THE SOUTH RIGHT-OF-WAY LINE OF CURLEE ROAD, TO THE POINT OF BEGINNING OF THE HEREINAFTER DESCRIBED PARCEL, THENCE SOUTH 0°22'48" EAST 2101.42 FEET ALONG A LINE PARALLEL WITH THE WEST LINE OF SECTION 29, TOWNSHIP 43 SOUTH, RANGE 37 EAST, TO THE NORTH RIGHT-OF-WAY LINE OF THE FLORIDA EAST COAST RAILWAY SPUR TRACK TO THE SUGAR CANE GROWERS COOPERATIVE'S SUGAR MILL, THENCE NORTH 89°27'07" EAST 1038.65 FEET ALONG SAID RIGHT-OF-WAY LINE TO A POINT ON A LINE WHICH SAID LINE IS PARALLEL WITH THE WEST LINE OF SECTION 29, TOWNSHIP 43 SOUTH, RANGE 37 EAST, THENCE NORTH 0°22'48" WEST 2092.52 FEET ALONG SAID PARALLEL LINE, TO THE SOUTH RIGHT-OF-WAY LINE OF CURLEE ROAD, THENCE SOUTH 89°56'34" WEST 1038.66 FEET ALONG THE SOUTH RIGHT-OF-WAY LINE OF CURLEE ROAD, TO THE POINT OF BEGINNING. CONTAINING: 50 ACRES.

HAS CAUSED THE SAME TO BE SURVEYED AND PLATTED AS SHOWN HEREON AND DO HEREBY DEDICATE AND RESERVE AS FOLLOWS:

- ROADWAY TRACT**
EAGLE CIRCLE, IS HEREBY DEDICATED IN FEE SIMPLE TO THE CITY OF BELLE GLADE AS PUBLIC RIGHT OF WAY FOR STREET, UTILITY AND DRAINAGE PROPOSES.
- DRAINAGE TRACTS**
TRACT L-1, AS SHOWN HEREON, IS HEREBY RESERVED IN FEE SIMPLE BY THE CITY OF BELLE GLADE FOR STORMWATER MANAGEMENT AND DRAINAGE PURPOSES.
- DRAINAGE EASEMENTS (D.E.)**
DRAINAGE EASEMENTS, AS SHOWN HEREON, ARE HEREBY RESERVED BY THE CITY OF BELLE GLADE FOR THE INSTALLATION AND MAINTENANCE OF DRAINAGE FACILITIES.
- LANDSCAPE BUFFER EASEMENTS (L.B.E.)**
LANDSCAPE BUFFER EASEMENTS, AS SHOWN HEREON, ARE HEREBY RESERVED BY THE CITY OF BELLE GLADE FOR LANDSCAPE BUFFER PURPOSES.
- UTILITY EASEMENTS (U.E.)**
THE UTILITY EASEMENTS, AS SHOWN HEREON, ARE HEREBY RESERVED BY THE CITY OF BELLE GLADE IN PERPETUITY FOR THE CONSTRUCTION AND MAINTENANCE OF UTILITY FACILITIES, INCLUDING CABLE TELEVISION SYSTEMS, THE INSTALLATION OF CABLE TELEVISION SYSTEMS SHALL NOT INTERFERE WITH THE CONSTRUCTION AND MAINTENANCE OF OTHER UTILITIES.
- CANAL MAINTENANCE AND UTILITY EASEMENTS (C.M. & U.E.)**
CANAL MAINTENANCE AND UTILITY EASEMENTS, AS SHOWN HEREON, ARE HEREBY RESERVED BY THE CITY OF BELLE GLADE FOR CANAL MAINTENANCE AND UTILITY PURPOSES. THE UTILITY PORTION OF SAID EASEMENT SHALL ADHERE TO THE SAME STIPULATIONS AS RECITED ABOVE IN THE PREVIOUS NOTE.
- LIMITED ACCESS EASEMENTS (L.A.E.)**
LIMITED ACCESS EASEMENTS, AS SHOWN HEREON, ARE HEREBY RESERVED BY THE CITY OF BELLE GLADE FOR THE PURPOSES OF PROHIBITING ACCESS BETWEEN LOTS AND ADJACENT RIGHTS-OF-WAY.
- EMERGENCY ACCESS EASEMENTS (E.A.E.)**
EMERGENCY ACCESS EASEMENTS, AS SHOWN HEREON, ARE HEREBY RESERVED BY THE CITY OF BELLE GLADE EMERGENCY ACCESS PURPOSES.
- LOT 2 AND LOT 3 AS SHOWN HEREON ARE RESERVED FOR RAY'S HERITAGE, LLC, A FLORIDA LIMITED LIABILITY COMPANY, ITS SUCCESSORS AND ASSIGNS FOR THE PURPOSES SET FORTH IN THE PLAT OF BELLE GLADE BUSINESS PARK PHASE II AND ALL OTHER LAWFUL PURPOSES.**
- LOT 6 AND LOT 7 AS SHOWN HEREON ARE RESERVED FOR TIMOTHY B. MCKEE, INC., A FLORIDA CORPORATION, ITS SUCCESSORS AND ASSIGNS FOR THE PURPOSES SET FORTH IN THE PLAT OF BELLE GLADE BUSINESS PARK PHASE II AND ALL OTHER LAWFUL PURPOSES.**
- LOT 4 AND LOT 5 AS SHOWN HEREON ARE RESERVED FOR S.K.A. FARMS L.L.P., A GEORGIA LIMITED LIABILITY LIMITED PARTNERSHIP ITS SUCCESSORS AND ASSIGNS FOR THE PURPOSES SET FORTH IN THE PLAT OF BELLE GLADE BUSINESS PARK PHASE II AND ALL OTHER LAWFUL PURPOSES.**
- TRACT L-1 IS HEREBY RESERVED IN FEE SIMPLE BY THE CITY OF BELLE GLADE FOR STORMWATER MANAGEMENT AND DRAINAGE PURPOSES.**
- LOT 1 AS SHOWN HEREON IS HEREBY RESERVED IN FEE SIMPLE FOR THE CITY OF BELLE GLADE FOR THE PURPOSES SET FORTH IN THE PLAT OF BELLE GLADE BUSINESS PARK PHASE II AND ALL OTHER LAWFUL PURPOSES.**

IN WITNESS WHEREOF TIMOTHY B. MCKEE, INC., A FLORIDA CORPORATION HAS CAUSED THESE PRESENTS TO BE SIGNED BY ITS DIRECTOR AND ITS CORPORATE SEAL TO BE AFFIXED HERETO BY AND WITH THE AUTHORITY OF ITS BOARD OF DIRECTORS THIS 28 DAY OF September, 2006.

WITNESS: *[Signature]*
Timothy B. McKee, Inc.
A FLORIDA CORPORATION
By: *[Signature]*
Timothy B. McKee, director

IN WITNESS WHEREOF Ray's Heritage, LLC, a Florida Limited Liability Company, HAS CAUSED THESE PRESENTS TO BE SIGNED BY ITS Manager BY AND WITH THE AUTHORITY OF ITS MEMBERS THIS 28 DAY OF September, 2006.

WITNESS: *[Signature]*
Ray's Heritage, LLC
A FLORIDA LIMITED LIABILITY COMPANY
By: *[Signature]*
RAYMOND R. ROTH, JR., MANAGER

IN WITNESS WHEREOF S.K.A. FARMS L.L.P., LTD, A GEORGIA LIMITED LIABILITY LIMITED PARTNERSHIP, HAS CAUSED THESE PRESENTS TO BE SIGNED BY A GENERAL PARTNER BY AND WITH THE AUTHORITY OF THE PARTNERSHIP THIS 22 DAY OF September, 2006.

WITNESS: *[Signature]*
S.K.A. FARMS L.L.P., LTD.
A GEORGIA LIMITED LIABILITY LIMITED PARTNERSHIP
By: *[Signature]*
Joseph E. Thompson, Jr., as trustee of the
Joseph E. Thompson, Jr. Amended and Restated Revocable Trust Agreement dated May 16, 1997.

Acknowledgement

State of Florida
County of Palm Beach
before me personally appeared Timothy B. McKee, director of Timothy B. McKee, Inc, a florida corporation who is personally known to me or who produced *[Signature]* as identification and who executed the foregoing instrument as director of timothy b. mckee, inc. a florida corporation and acknowledged to and before me that he executed such instrument as such officer of said corporation, and that the seal affixed to the foregoing instrument is the corporate seal of said corporation and that it was affixed to said instrument by due and regular corporate authority and that said instrument is the free act and deed of said corporation.
Witness my hand and official seal this 28 day of September, 2006

NOTARY PUBLIC:
Sign: *[Signature]*
Print: *[Name]*
State of Florida
My commission expires: *[Date]*

Acknowledgement

State of Florida
County of Palm Beach
before me personally appeared Raymond R. Roth, Jr., manager of Ray's Heritage, LLC, a florida limited liability company who is personally known to me or who produced *[Signature]* as identification and who executed the foregoing instrument as manager of Ray's Heritage, LLC, a florida limited liability company and acknowledged to and before me that he executed such instrument as manager of said limited liability company by due and regular company authority and that said instrument is the free act and deed of said company.
Witness my hand and official seal this 28 day of September, 2006

NOTARY PUBLIC:
Sign: *[Signature]*
Print: *[Name]*
State of Florida
My commission expires: *[Date]*

Acknowledgement

State of Florida
County of Palm Beach
before me personally appeared Joseph E. Thompson, Jr., as trustee of the Joseph E. Thompson, Jr. Amended and Restated Revocable Trust Agreement dated May 16, 1997 as a general partner of S.K.A. FARMS L.L.P., LTD, A GEORGIA LIMITED LIABILITY LIMITED PARTNERSHIP who is personally known to me or who produced *[Signature]* as identification and who executed the foregoing instrument as general partner of S.K.A. FARMS L.L.P., LTD, A GEORGIA LIMITED LIABILITY LIMITED PARTNERSHIP and acknowledged to and before me that he executed such instrument as general partner of said LIMITED LIABILITY LIMITED PARTNERSHIP by due and regular limited partnership authority and that said instrument is the free act and deed of said limited partnership.
Witness my hand and official seal this 22 day of September, 2006

NOTARY PUBLIC:
Sign: *[Signature]*
Print: *[Name]*
State of Florida
My commission expires: *[Date]*

ACKNOWLEDGEMENTS
STATE OF FLORIDA) SS
COUNTY OF PALM BEACH)

00004.008

BEFORE ME PERSONALLY APPEARED RAY TORRES SANCHEZ, MAYOR OF THE CITY OF BELLE GLADE, WHO IS PERSONALLY KNOWN TO ME, OR HAS PRODUCED A DRIVER'S LICENSE AS IDENTIFICATION, AND DID NOT TAKE AN OATH, AND WHO EXECUTED THE FOREGOING INSTRUMENT, AND SEVERALLY ACKNOWLEDGED TO AND BEFORE ME THAT HE EXECUTED SUCH INSTRUMENT AS SUCH OFFICER OF SAID CORPORATION, AND THE SEAL AFFIXED TO THE FOREGOING INSTRUMENT IS THE CORPORATE SEAL OF SAID CORPORATION AND THAT IT WAS AFFIXED TO SAID INSTRUMENT BY DUE AND REGULAR CORPORATE AUTHORITY, AND THAT SAID INSTRUMENT IS THE FREE ACT AND DEED OF SAID CORPORATION.

WITNESS MY HAND AND OFFICIAL SEAL THIS 28 DAY OF September, 2006.

MY COMMISSION EXPIRES *[Date]*
NAME: *[Name]*
NOTARY PUBLIC
STATE OF FLORIDA
COMMISSION No. *[Number]*

CITY PLANNING AND ZONING BOARD:
THIS IS TO CERTIFY THAT THIS PLAT HAS BEEN APPROVED BY THE PLANNING AND ZONING BOARD OF THE CITY OF BELLE GLADE, FLORIDA, THIS *[Date]* DAY OF *[Month]*, 2006.

BY: *[Signature]*
NAME, PRESIDENT

CITY ENGINEER:
THIS PLAT HEREBY APPROVED FOR RECORD THIS *[Date]* DAY OF *[Month]*, 2006.

BY: *[Signature]*
NAME, CITY ENGINEER
FLORIDA P.E. REG. NO. *[Number]*

CITY COMMISSION:
THIS IS TO CERTIFY THAT THIS PLAT HAS BEEN APPROVED FOR RECORD BY THE CITY COMMISSION OF THE CITY OF BELLE GLADE PURSUANT TO RESOLUTION NO. *[Number]* ADOPTED THIS *[Date]* DAY OF *[Month]*, 2006.

BY: *[Signature]*
RAY TORRES SANCHEZ, MAYOR

BY: *[Signature]*
DEBRA R. BUFF, CITY CLERK

TITLE CERTIFICATION
STATE OF FLORIDA)
COUNTY OF PALM BEACH) SS

I, *[Signature]*, A DULY LICENSED ATTORNEY IN THE STATE OF FLORIDA DO HEREBY CERTIFY THAT I HAVE EXAMINED THE TITLE TO THE HEREON DESCRIBED PROPERTY; THAT I FIND THE TITLE TO THE PROPERTY IS VESTED IN: THE CITY OF BELLE GLADE, TIMOTHY B. MCKEE, INC., RAY'S HERITAGE, LLC, AND S.K.A. FARMS, L.L.P., LTD; THAT THE CURRENT TAXES HAVE BEEN PAID; THAT THERE ARE NO MORTGAGES OF RECORD; AND THAT THERE ARE NO ENCUMBRANCES OF RECORD.

DATED: *[Date]*
ATTORNEY-AT-LAW LICENSED
IN FLORIDA
[Signature]

- SURVEYOR'S NOTES:
- BEARINGS SHOWN HEREON ARE GRID BEARINGS OF THE FLORIDA STATE PLANE COORDINATE SYSTEM, EAST ZONE, ON THE 1983 NORTH AMERICAN DATUM, 1998 ADJUSTMENT.
 - THE WEST LINE OF SECTION 29, TOWNSHIP 43 SOUTH, RANGE 37 EAST BEARS SOUTH 0°22'48" EAST AND ALL OTHER BEARINGS ARE RELATIVE THERETO.
 - I.R. SET MEANS SET 5/8" IRON ROD AND CAP (L.B. 3411)
 - P.C.P MEANS SET PERMANENT CONTROL POINT (L.B. 3411)
 - P.R.M. MEANS SET PERMANENT REFERENCE MONUMENT (L.B. 3411)

REVIEWING SURVEYOR'S STATEMENT:
THIS IS TO CERTIFY THAT THE UNDERSIGNED PROFESSIONAL SURVEYOR AND MAPPER, UNDER CONTRACT WITH THE CITY OF BELLE GLADE, FLORIDA, HAS REVIEWED THIS PLAT " BELLE GLADE BUSINESS PARK PHASE II, REPLAT " AS REQUIRED BY CHAPTER 177.081 (1), FLORIDA STATUTES, AND FINDS THAT IT COMPLIES WITH ALL THE REQUIREMENTS OF CHAPTER 177, PART 1, FLORIDA STATUTES.

DATED: *[Date]*
NAME NORMAN J. HOWARD, P.S.M.
FLORIDA LICENSE No. 5776

SURVEYOR & MAPPER'S CERTIFICATE
THIS IS TO CERTIFY THAT THE PLAT SHOWN HEREON, PREPARED UNDER MY DIRECTION IN THE OFFICE OF PAG SURVEYORS, INC., IS A TRUE AND CORRECT REPRESENTATION OF A SURVEY MADE UNDER MY RESPONSIBLE DIRECTION AND SUPERVISION; THAT SAID SURVEY IS ACCURATE TO THE BEST OF MY KNOWLEDGE AND BELIEF; THAT PERMANENT REFERENCE MONUMENTS ("P.R.M.S"), PERMANENT CONTROL POINTS ("P.C.P.S"), AND MONUMENTS ACCORDING TO SEC. 177.091 (9), F.S., HAVE BEEN PLACED AS REQUIRED BY LAW; AND, FURTHER, THAT THE SURVEY DATA COMPLIES WITH ALL THE REQUIREMENTS OF CHAPTER 177, PART 1 FLORIDA STATUTES, AS AMENDED.

DATE: *[Date]*
PEDRO A. GONZALEZ
PROFESSIONAL SURVEYOR AND MAPPER
FLORIDA LICENSE NUMBER 2287

NOTICE:
This plat as recorded in its graphic form, is the official depiction of the subdivided lands described herein and will in no circumstances be supplanted in authority by any other graphic or digital form of the plat.
There may be additional restrictions that are not recorded in this plat that may be found in the public records of this county.